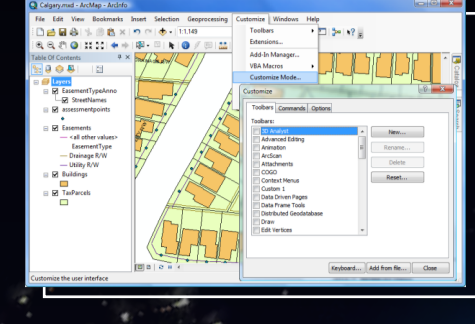


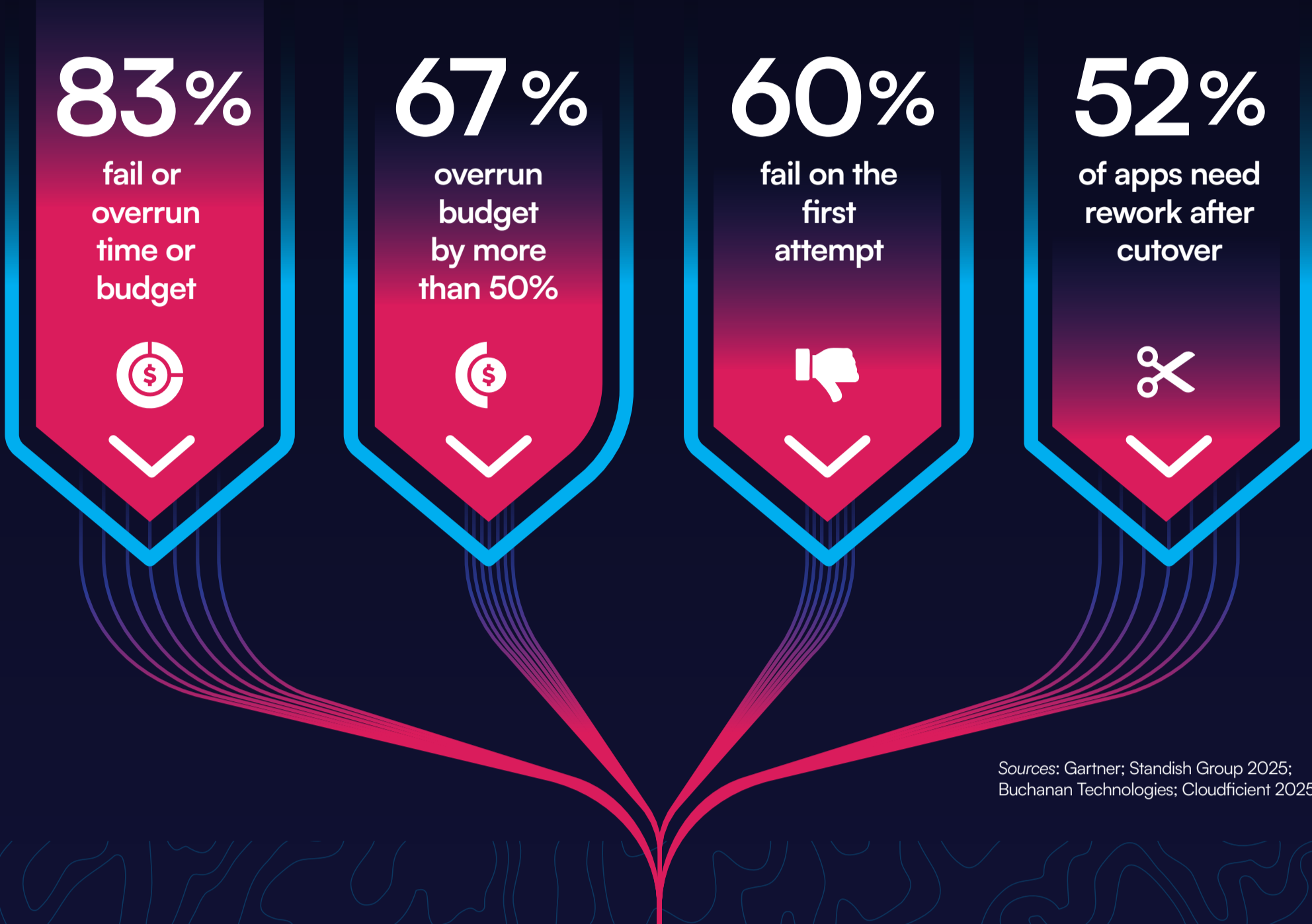
Migrating legacy OSS GIS fiber planning

The risk landscape, and what reduces it

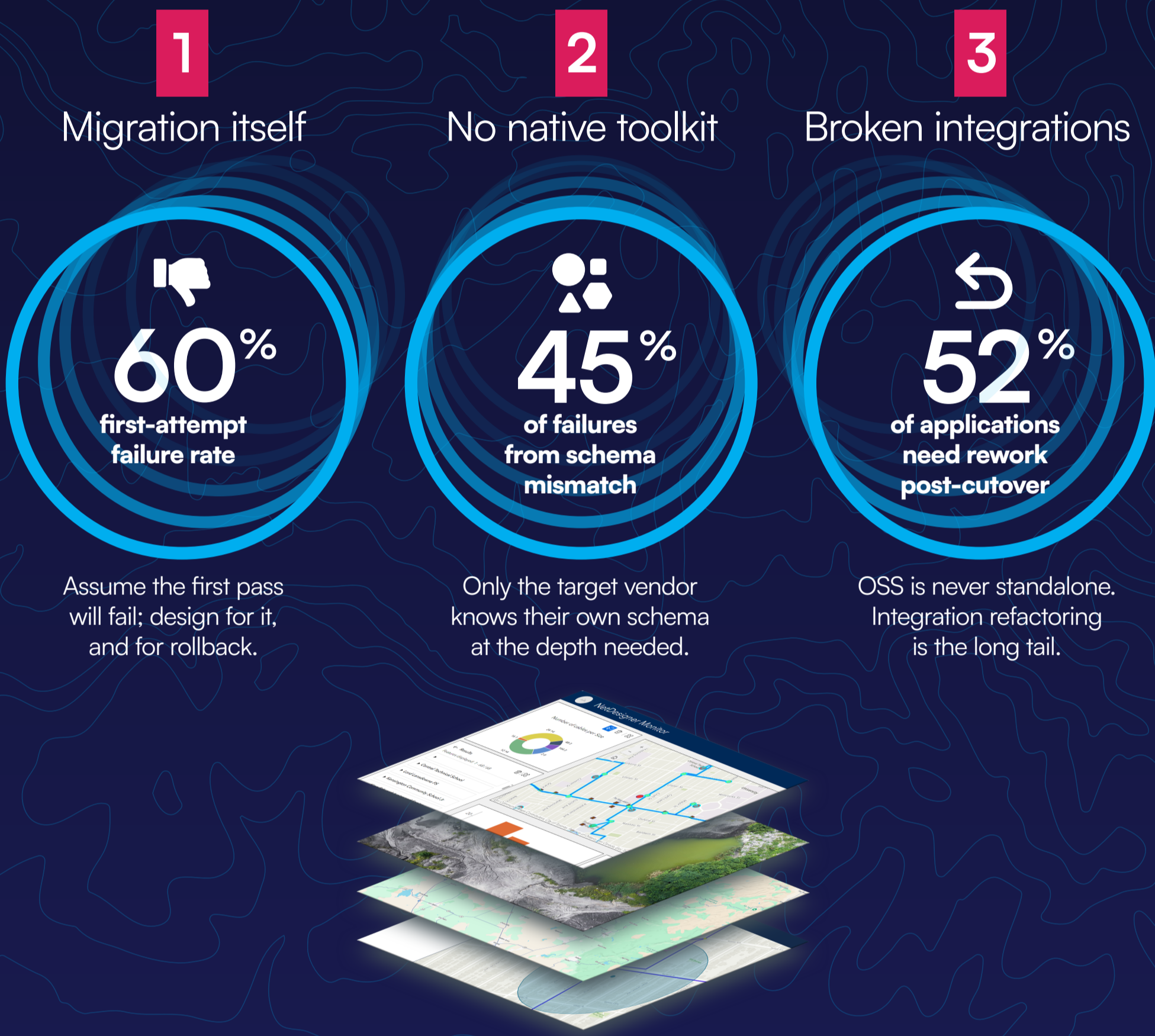


2026
ArcMap end of support

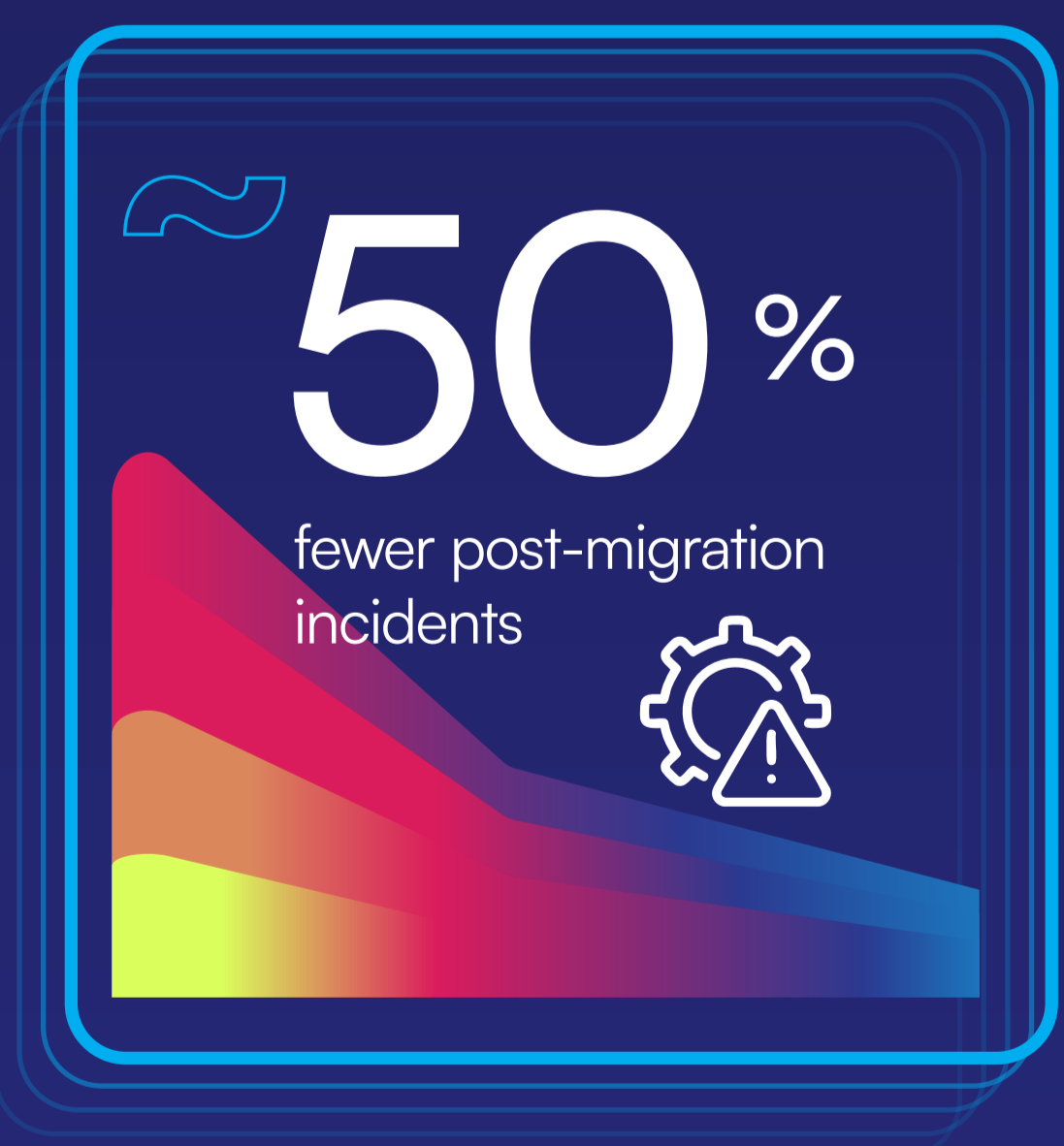
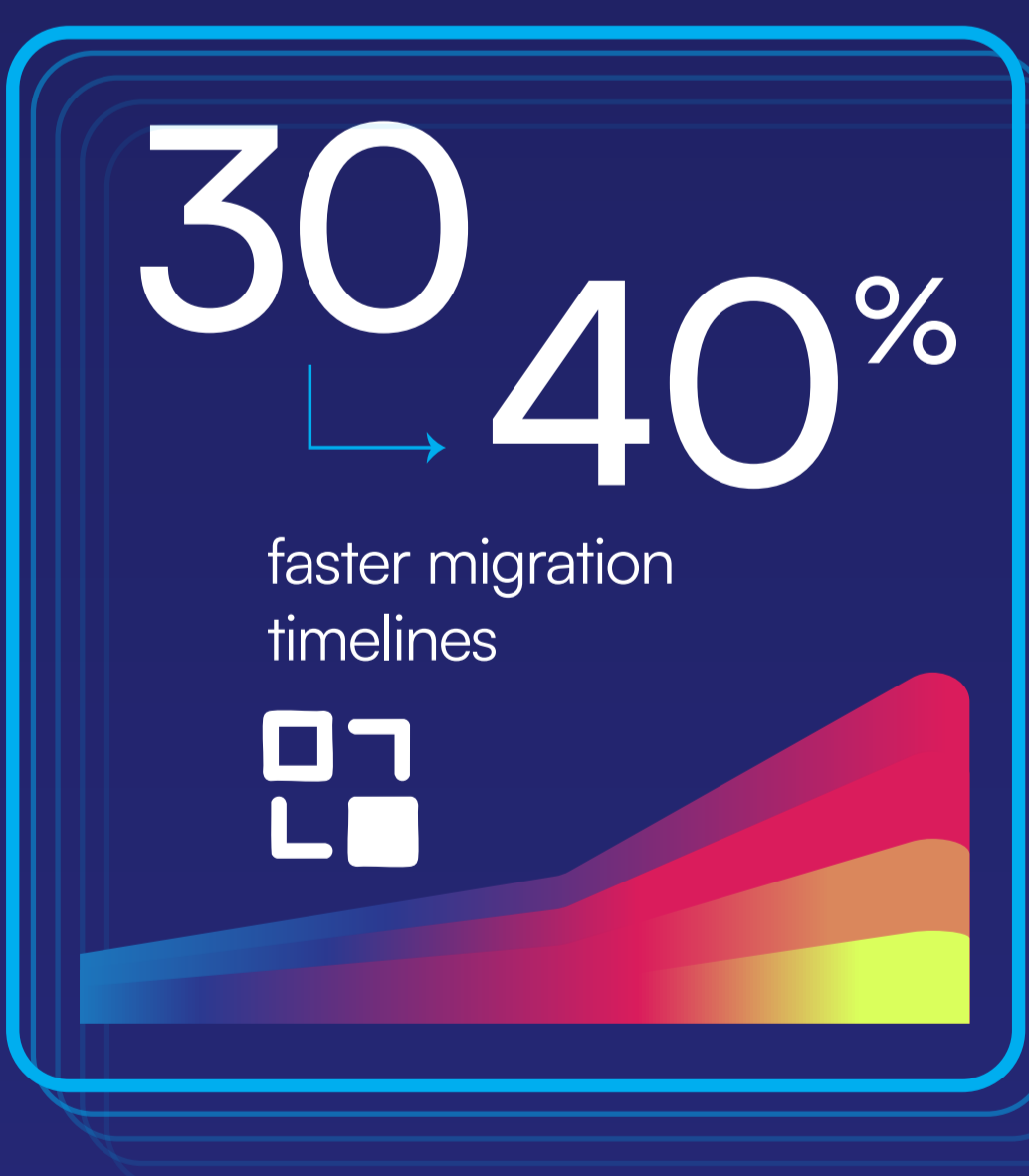
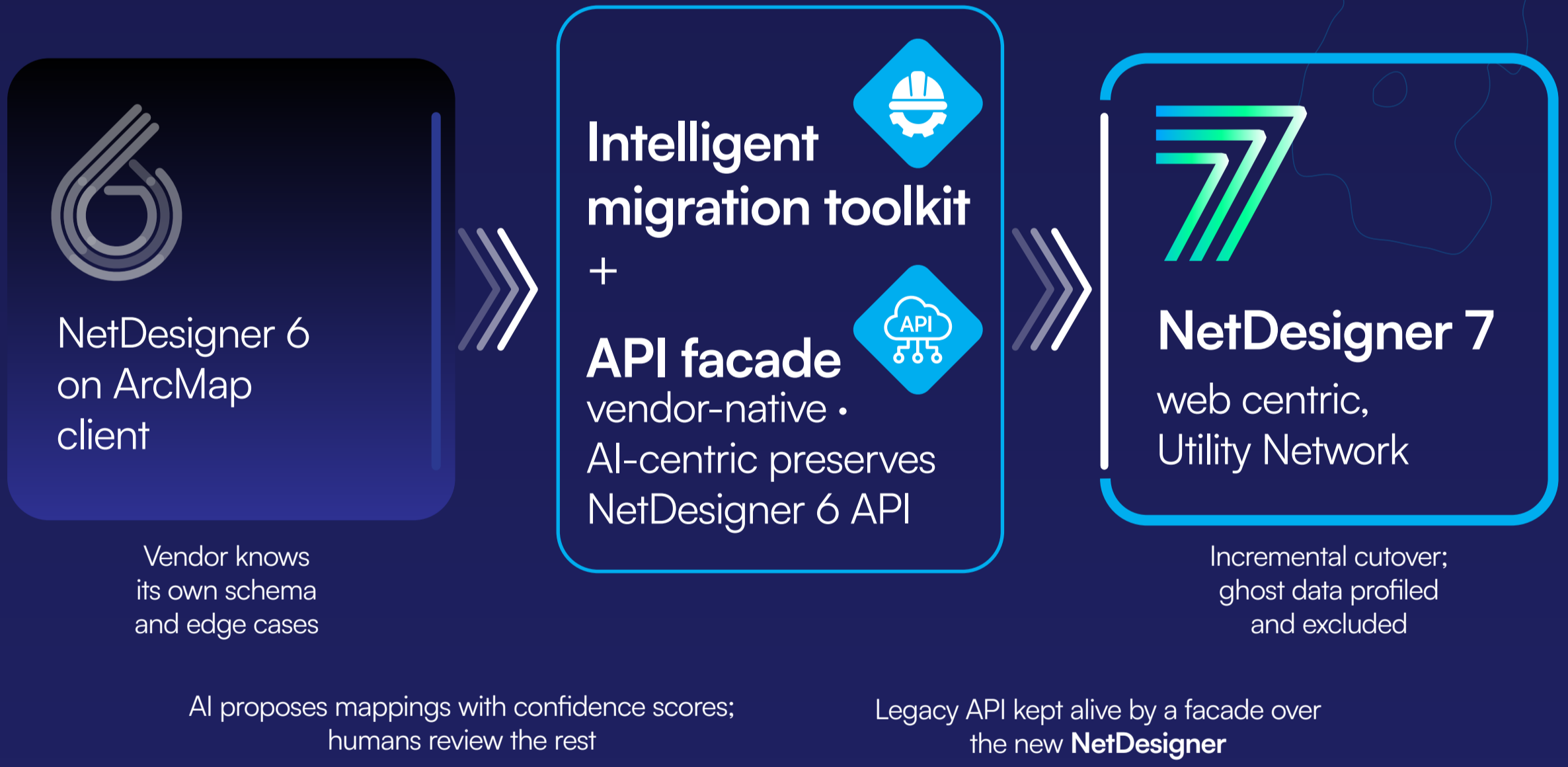
The baseline reality of large migrations



Three risks that compound



How NetDesigner closes the gap



Result stats: McKinsey, on AI-assisted migration frameworks

The bottom line

Treat migration as engineering.
Insist on a vendor-native toolkit.
Keep the integration surface intact.



NetDesigner 7
built from the ground up
for migration success

